

mPCR-M (Multiplex)



HPV DNA Genotyping for Types 20/32

> Product Introduction

This kit uses the multiplex fluorescent PCR melting curve detection method to qualitatively detect the DNA of 32 types of human papillomavirus (HPV) in exfoliated cervical cells from females. These types include:

High-risk types: HPV16, 18, 31, 33, 35, 39, 45, 51, 52, 56, 58, 59, 68;

Potentially high-risk types: HPV26, 53, 66, 73, 82;

Low-risk types: HPV6, 11, 40, 42, 43, 44, 54, 61, 67, 69, 71, 72, 81, 83.

> Product Features

(1) Technical Comparison

mPCR-M(Multiplex)

Laboratory conditions:

Multiple devices available:
GT9604 / 96S / 96P

Experimental Procedures:

Nucleic Acid Extraction-PCR-
Judgement Result.

Detection Times:
2h.

Compare

PCR-hybridization

Laboratory conditions:

Special equipment.

Experimental Procedures:

Nucleic Acid Extraction-PCR-
Hybridization-Judgement Result.

Detection Times:
4-6h.

(2) Features

**Convenient,
fast and efficient**
≤2hours.

High Throughput
94 or 46 samples
in a single run.

Stable detection effect
Stored at 4°C for 3 weeks.

High Sensitivity

**Strong anti-
interference ability**

For hemoglobin,
gynecological external
drugs, and urine.

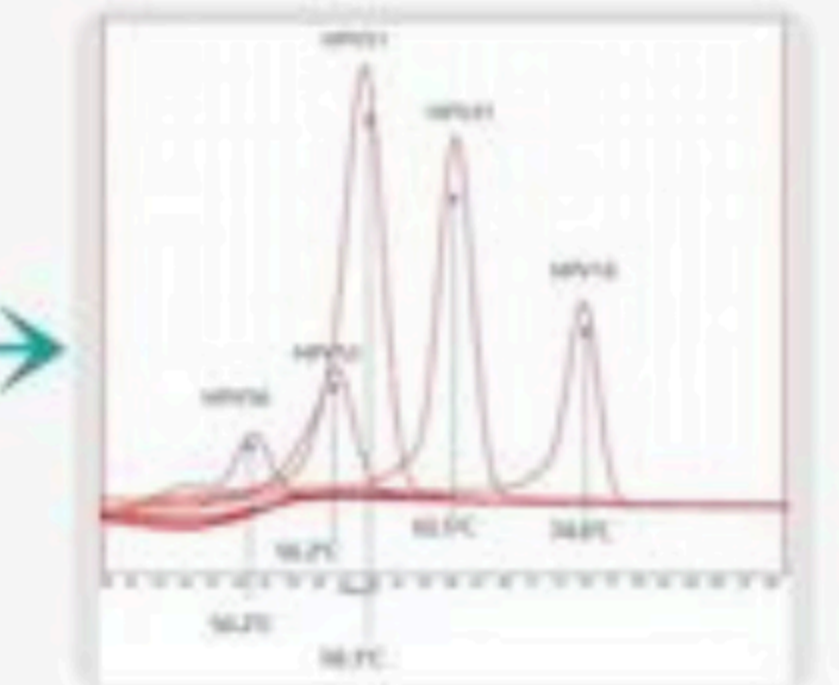
**Results obtained
in one step.**

Anti-pollution system

**The software intelligently
interprets the results**



Operational Procedure:



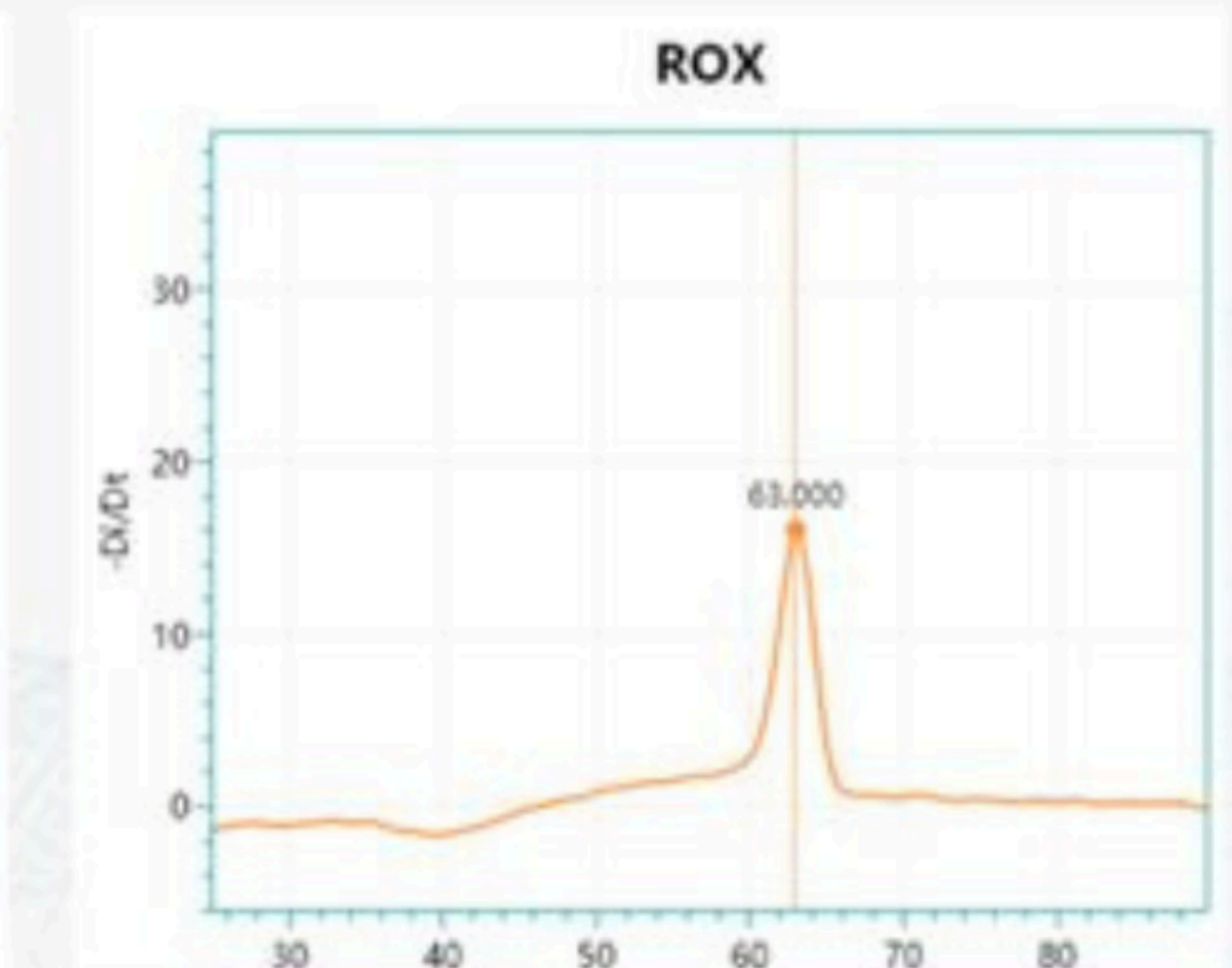
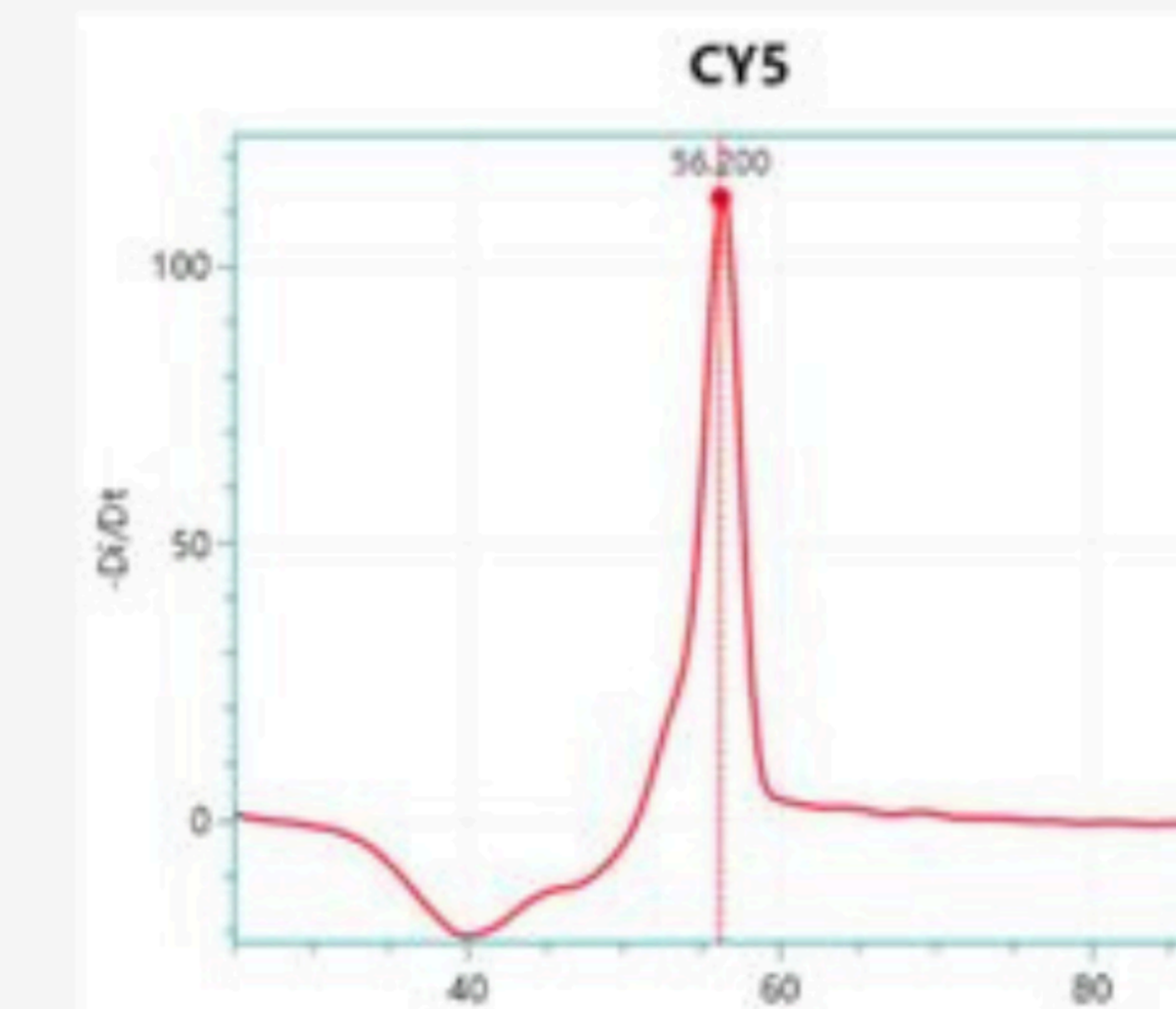
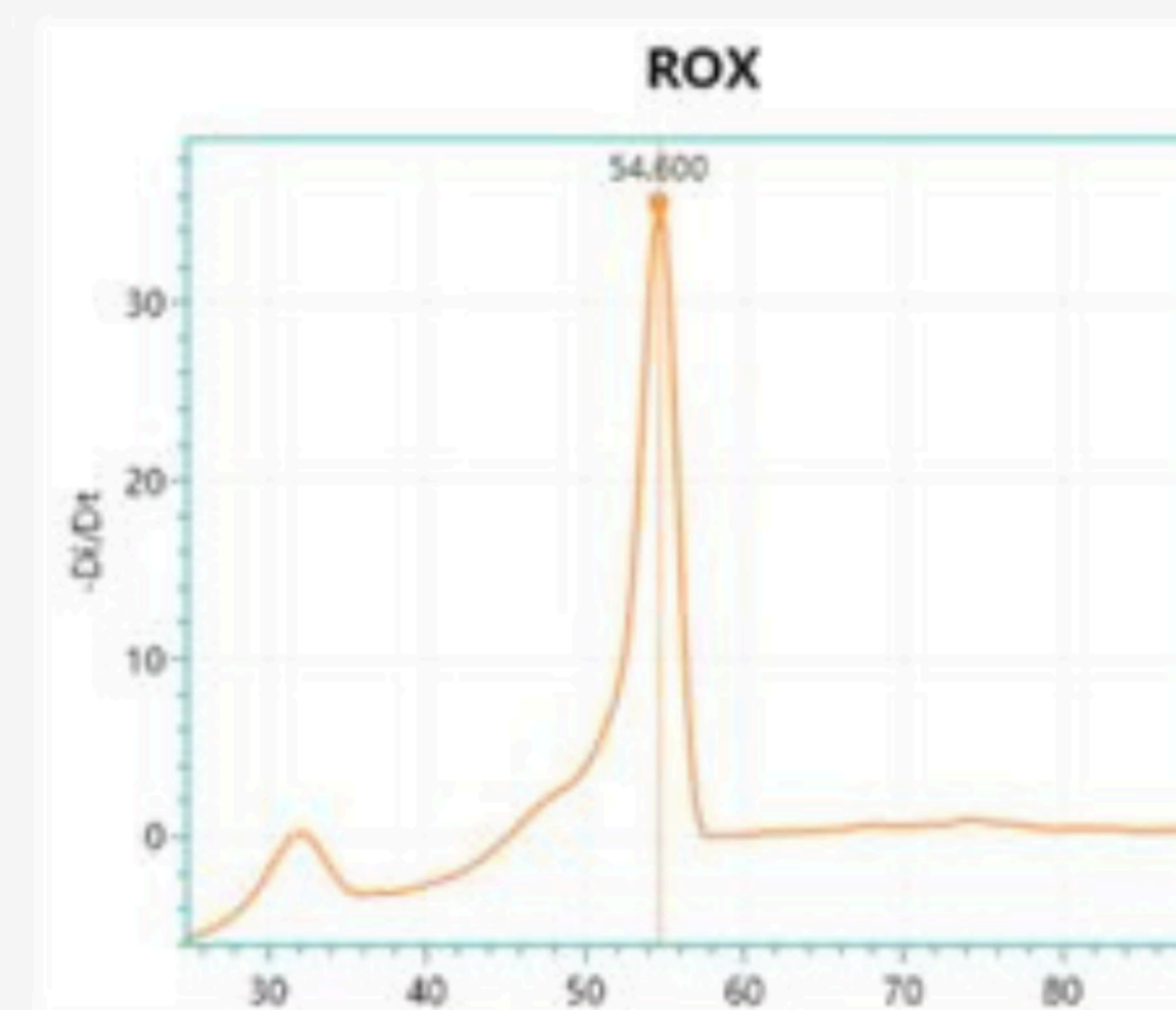
Sample Collection

Nucleic Acid Extraction

PCR Amplification

Result Interpretation

> Detection Results



LUOYANG GENETURE MEDICAL TECHNOLOGY CO.,LTD.

Address:502,Building 23,Luoyang National University Science
And Technology Park,no.2 PenglaiRoad.Jianxi District,Luovang
Area Of China(Henan)Pilot Free Trade Zone.

Tel:+86-0379-61296231

Web:www.geneture.com

